

JVC

SCHEMATIC DIAGRAMS

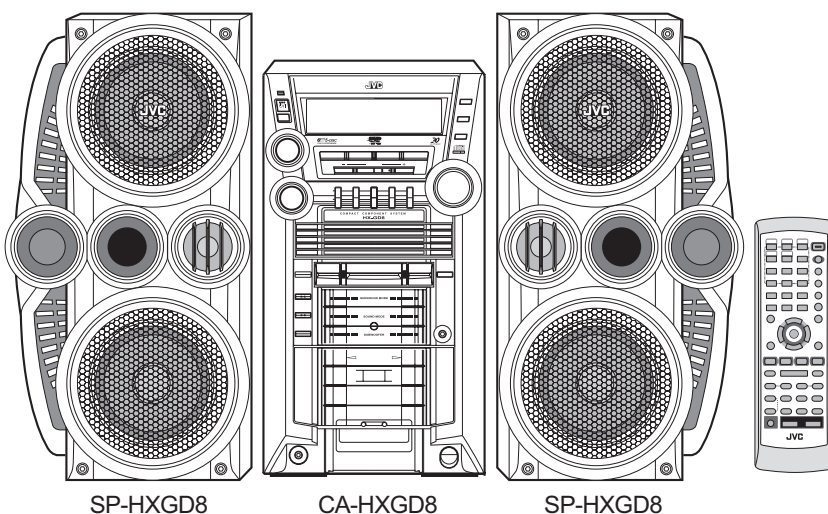
COMPACT COMPONENT SYSTEM

HX-GD8

CD-ROM No.SML200407

Area suffix

B ----- U.K.
 E ----- Continental Europe
 EN ----- Northern Europe
 EV ----- Eastern Europe
 EE ----- Russian Federation



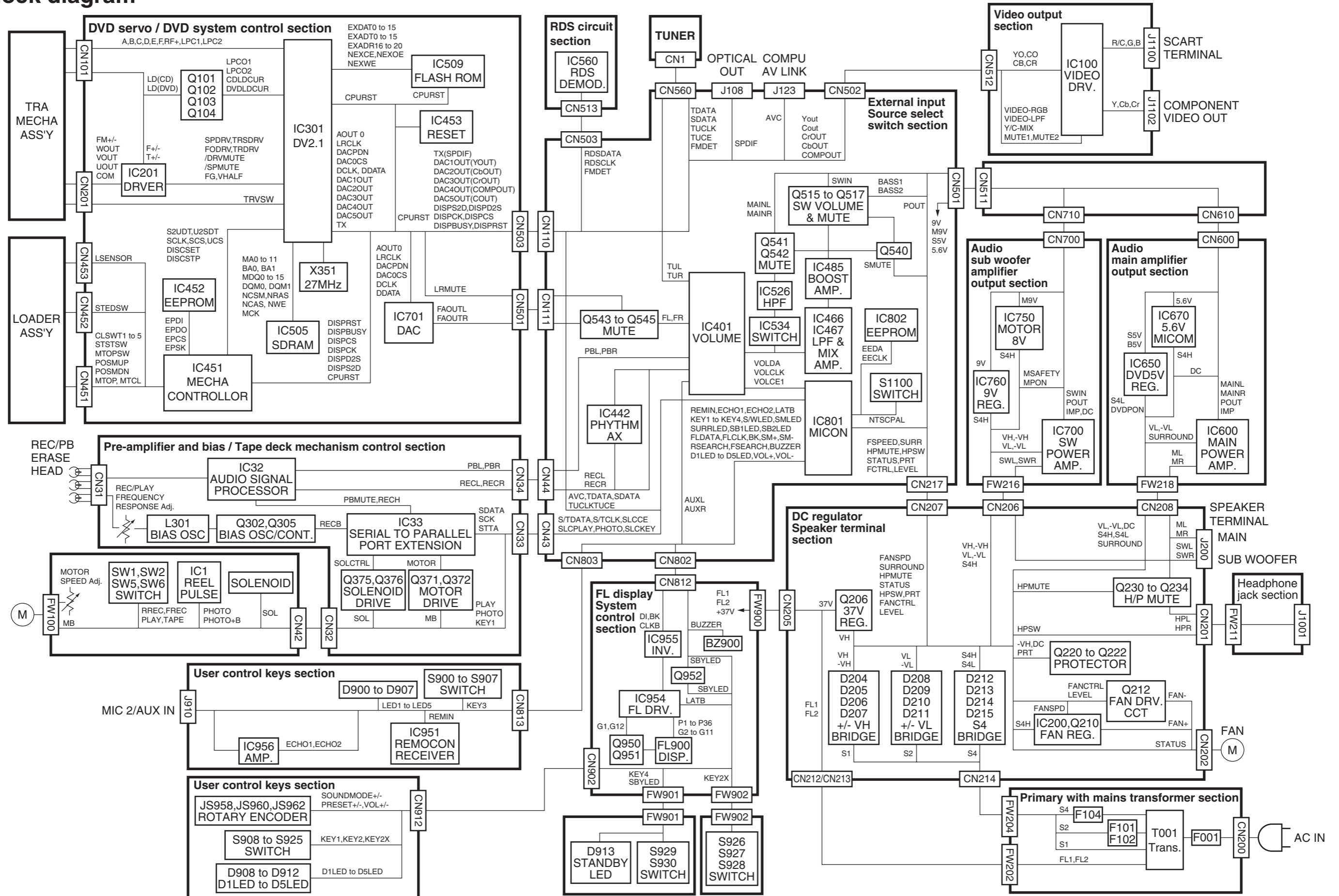
Contents

Block diagram	2-1
Standard schematic diagrams	2-2
Printed circuit boards	2-11 to 15

In regard with component parts appearing on the silk-screen printed side (parts side) of the PWB diagrams, the parts that are printed over with black such as the resistor (■), diode (▬) and ICP (●) or identified by the "⚠" mark nearby are critical for safety.

(This regulation does not correspond to J and C version.)

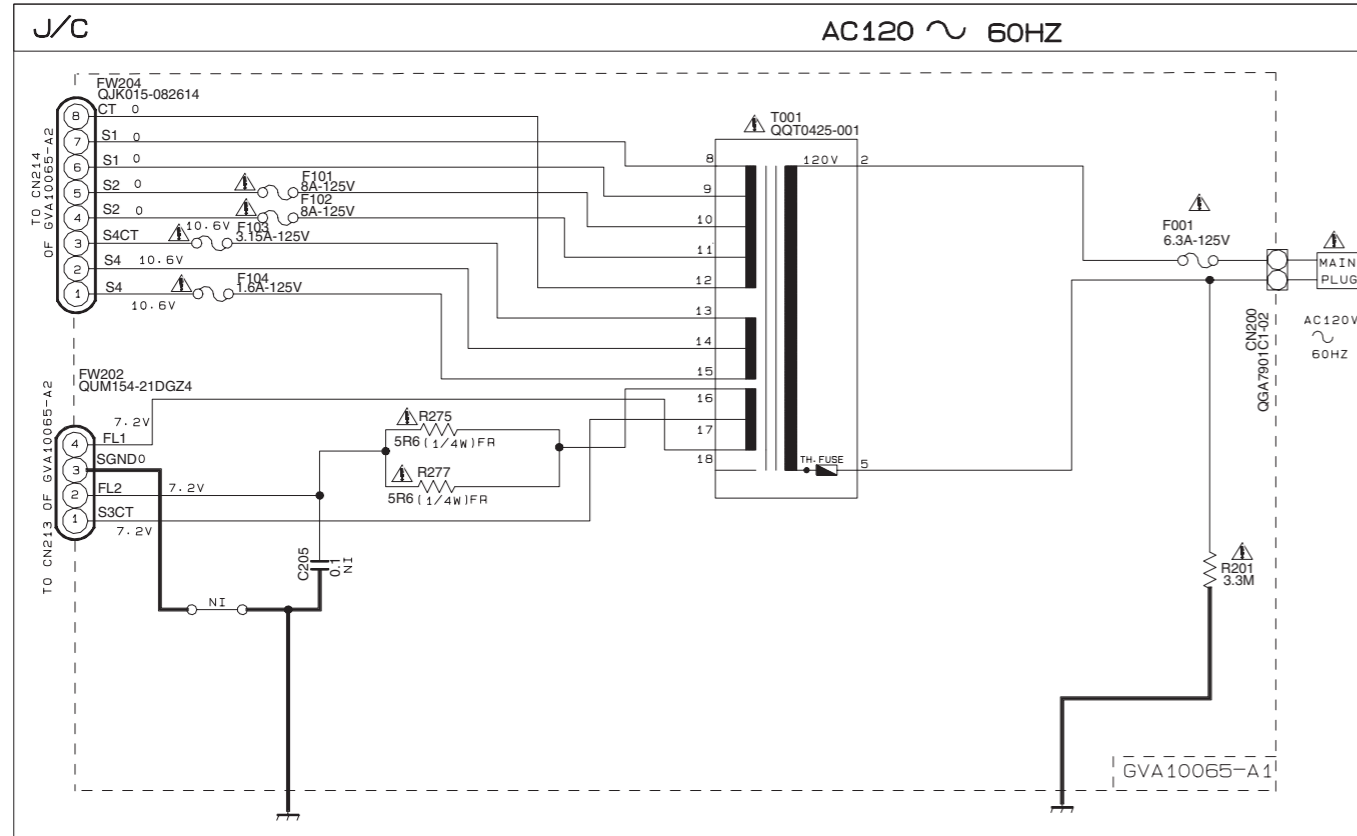
Block diagram



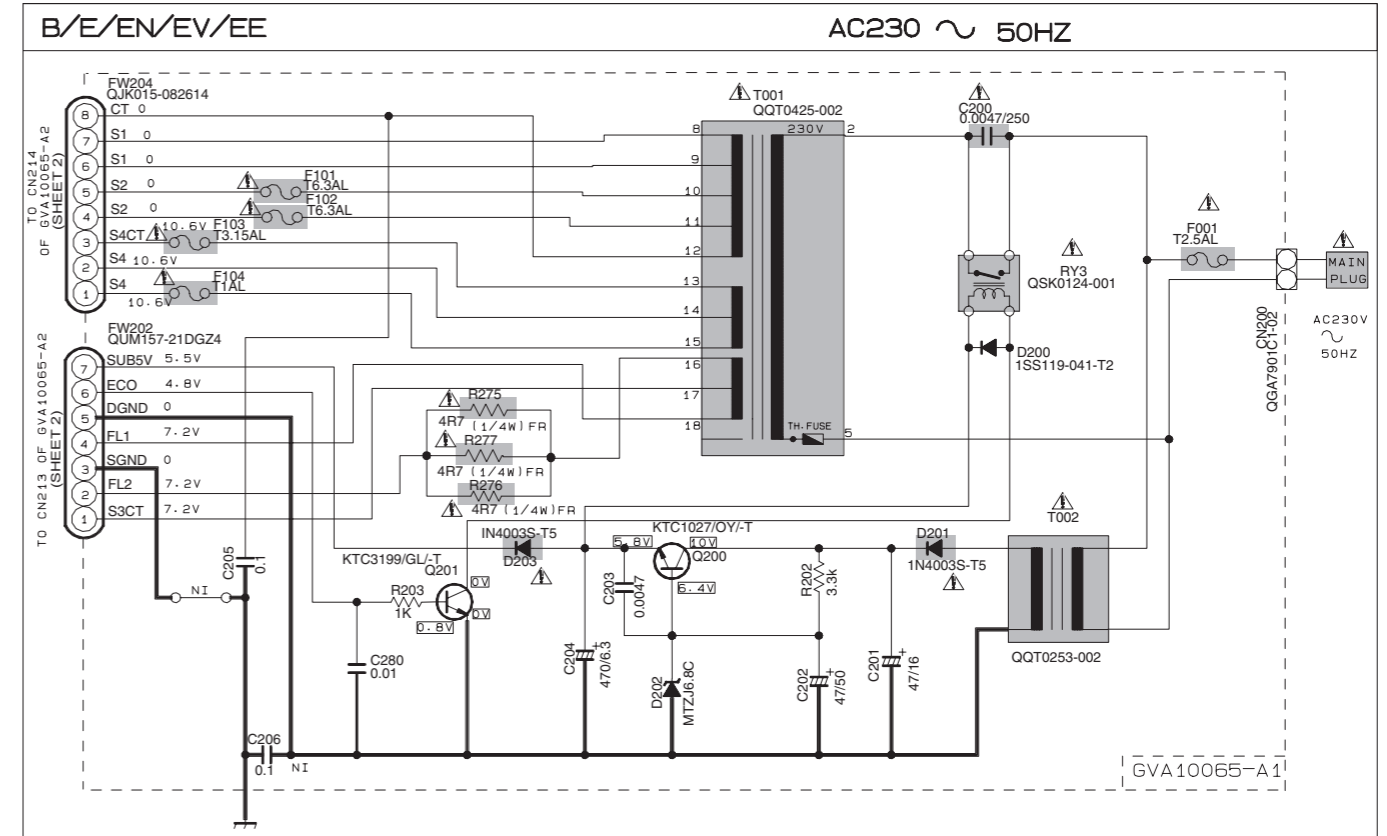
Standard schematic diagrams

Primary with main transformer section

POWER SUPPLY BLOCK



POWER SUPPLY BLOCK



EXPLANATION OF OVERALL OF SCHEMA.

MODEL HX-GDB

SHEET NUMBER	CIRCUITS DESCRIPTION
1	.PRIMARY WITH MAINS TRANSFORMER
2	.DC REGULATORS/AUDIO OUTPUT
3	.EXTERNAL INPUT / SOURCE SELECTOR SWITCH
4	.FL DISPLAY / SYSTEM CONTROL / USER CONTROL KEYS
5	.VIDEO OUTPUT CIRCUIT
6	.RDS CIRCUIT
7	.DVD SERVO / DVD SYSTEM CONTROL
8	.DVD CHANGER MECHANISM CONTROL
9	.TAPE CIRCUITS SUCH AS PRE-AMP AND BIAS .TAPE DECK MECHANISM CONTROL

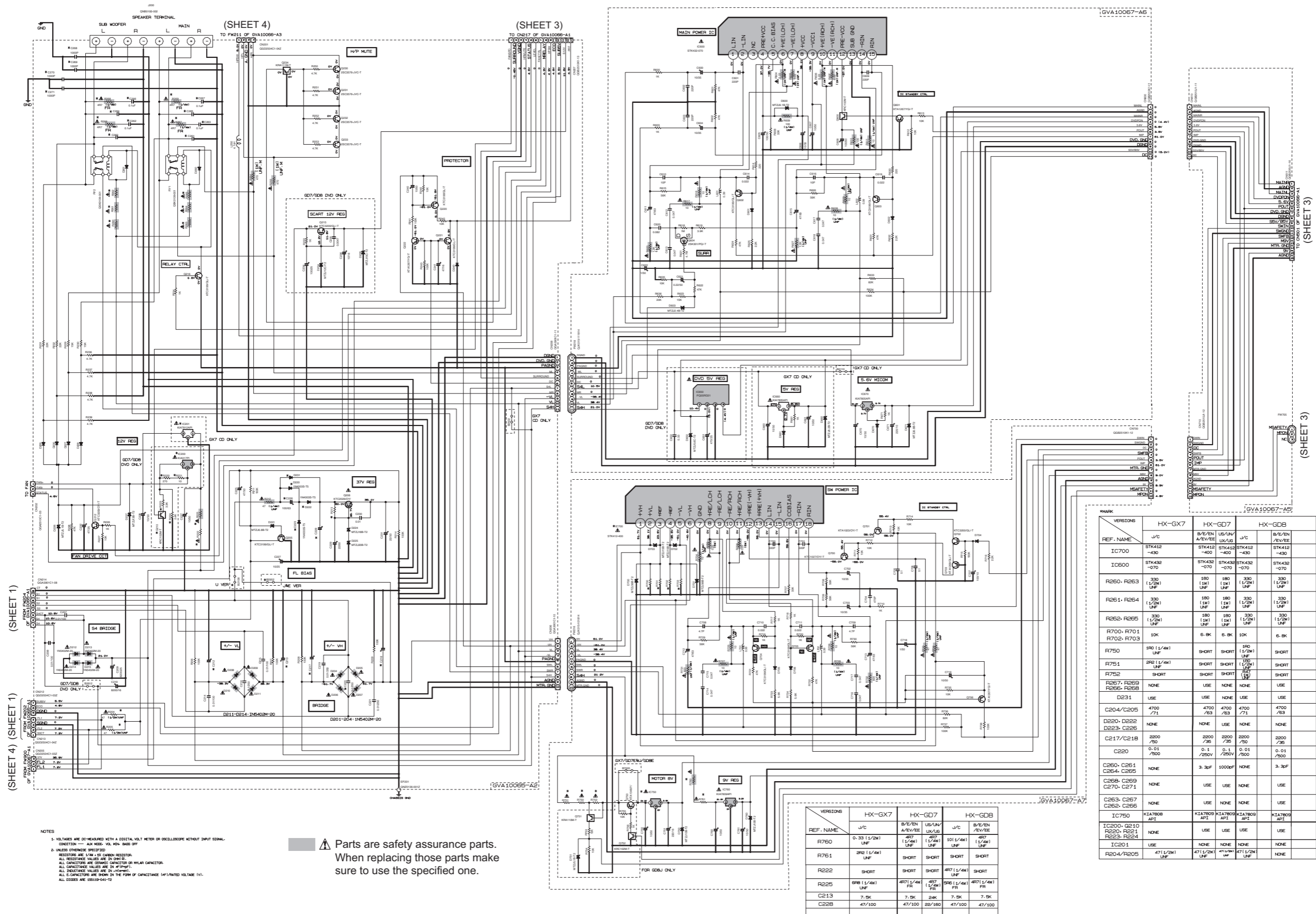
VERSION CODES
J : U.S.A
C : CANADA
B : U.K.
E : CONTINENTAL EUROPE
EN : NORTH EUROPE
EV : EASTERN EUROPE
EE : RUSSIA
A : AUSTRALIA
LW : SOUTH AMERICA EXCEPT ARGENTINA
US : SINGAPORE
UN : INDONESIA
UX : SAUDI ARABIA

NOTE

1. NI - COMPONENT NOT INSERT

Parts are safety assurance parts.
When replacing those parts make sure to use the specified one.

DC regulators / Audio output section



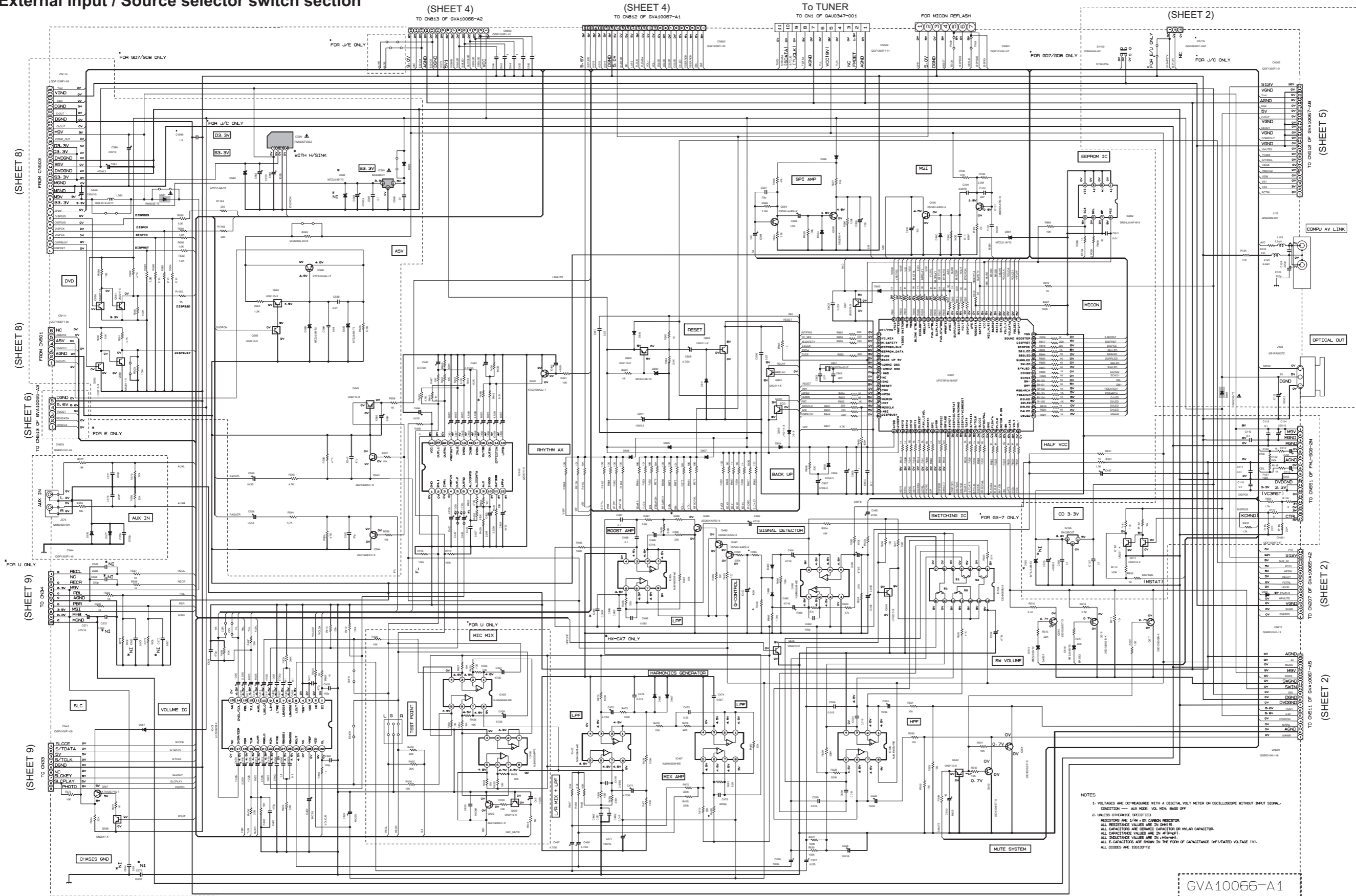
NOTES
 1. VOLTAGES ARE INDICATED WITH A CAPITAL VOLT LETTER OR OVERLINE WITHOUT SHOWN SIGNAL CONDITION — AUX KEYS: VOL, MIN, BASE OFF
 2. UNLESS OTHERWISE SPECIFIED
 RESISTORS ARE 1/4W 5% CARBON RESISTOR
 ALL RESISTANCE VALUES ARE IN OHMS
 ALL CAPACITORS ARE CERAMIC CAPACITOR OR POLYMER CAPACITOR
 ALL CAPACITANCE VALUES ARE IN PICOFARADS
 ALL CAPACITANCE VALUES ARE IN MICROFARADS
 ALL CAPACITORS ARE SHOWN IN THE FORM OF CAPACITANCE (μF)/RATED VOLTAGE (V)
 ALL DIMENSIONS ARE IN MILLIMETERS

⚠ Parts are safety assurance parts.
 When replacing those parts make sure to use the specified one.

REF. NAME	HX-GX7		HX-GD7		HX-GDB	
	J/C	B/E/EN A/EV/EE	US/AN UK/US	J/C	B/E/EN A/EV/EE	US/AN UK/US
R750	0.33 (1/2W) UNF	47	10 (1/4W) UNF	47	10 (1/4W) UNF	47
R751	5R0 (1/4W) UNF	SHORT	SHORT	SHORT	SHORT	SHORT
R222	SHORT	SHORT	SHORT	47 (1/4W) UNF	SHORT	SHORT
R225	5R0 (1/4W) UNF	47 (1/2W) UNF	5R0 (1/4W) UNF	47 (1/2W) UNF	47 (1/2W) UNF	47 (1/2W) UNF
C213	7.5K	7.5K	24K	7.5K	7.5K	7.5K
C228	47/100	47/100	33/100	47/100	47/100	47/100

REF. NAME	HX-GX7		HX-GD7		HX-GDB	
	J/C	B/E/EN A/EV/EE	US/AN UK/US	J/C	B/E/EN A/EV/EE	US/AN UK/US
IC700	STK412 -430	STK412 -430	STK412 -430	STK412 -430	STK412 -430	STK412 -430
IC600	STK432 -370	STK432 -370	STK432 -370	STK432 -370	STK432 -370	STK432 -370
R260, R263	330 (1/2W) UNF	180 (1W) UNF	180 (1W) UNF	330 (1/2W) UNF	330 (1/2W) UNF	330 (1/2W) UNF
R261, R264	330 (1/2W) UNF	180 (1W) UNF	180 (1W) UNF	330 (1/2W) UNF	330 (1/2W) UNF	330 (1/2W) UNF
R262, R265	330 (1/2W) UNF	180 (1W) UNF	180 (1W) UNF	330 (1/2W) UNF	330 (1/2W) UNF	330 (1/2W) UNF
R700, R701	10K	6.8K	6.8K	10K	6.8K	6.8K
R702, R703	10K	6.8K	6.8K	10K	6.8K	6.8K
R750	5R0 (1/4W) UNF	SHORT	SHORT	5R0 (1/4W) UNF	SHORT	SHORT
R751	5R0 (1/4W) UNF	SHORT	SHORT	5R0 (1/4W) UNF	SHORT	SHORT
R752	SHORT	SHORT	SHORT	SHORT	SHORT	SHORT
R267, R269 R266, R268	NONE	USE	NONE	NONE	USE	USE
D231	USE	USE	NONE	USE	USE	USE
C204/C205	4700 /71	4700 /63	4700 /71	4700 /71	4700 /63	4700 /63
D220, D222 D223, C226	NONE	NONE	USE	NONE	NONE	NONE
C217/C218	2200 /50	2200 /35	2200 /35	2200 /50	2200 /35	2200 /35
C220	0.01 /500	0.1 /250V	0.1 /250V	0.01 /500	0.1 /500	0.01 /500
C260, C261 C264, C265	NONE	3.3μF	1000μF	NONE	3.3μF	3.3μF
C268, C269 C270, C271	NONE	USE	USE	NONE	USE	USE
C263, C267 C262, C266	NONE	USE	NONE	NONE	USE	USE
IC750	K1A7808 API	K1A7808 API	K1A7808 API	K1A7808 API	K1A7808 API	K1A7808 API
IC200, G210 R220, R221 R223, R224	NONE	USE	USE	USE	USE	USE
IC201	NONE	NONE	NONE	NONE	NONE	NONE
R204/R205	47 (1/2W) UNF	47 (1/2W) UNF	47 (1/2W) UNF	47 (1/2W) UNF	47 (1/2W) UNF	NONE

External input / Source selector switch section

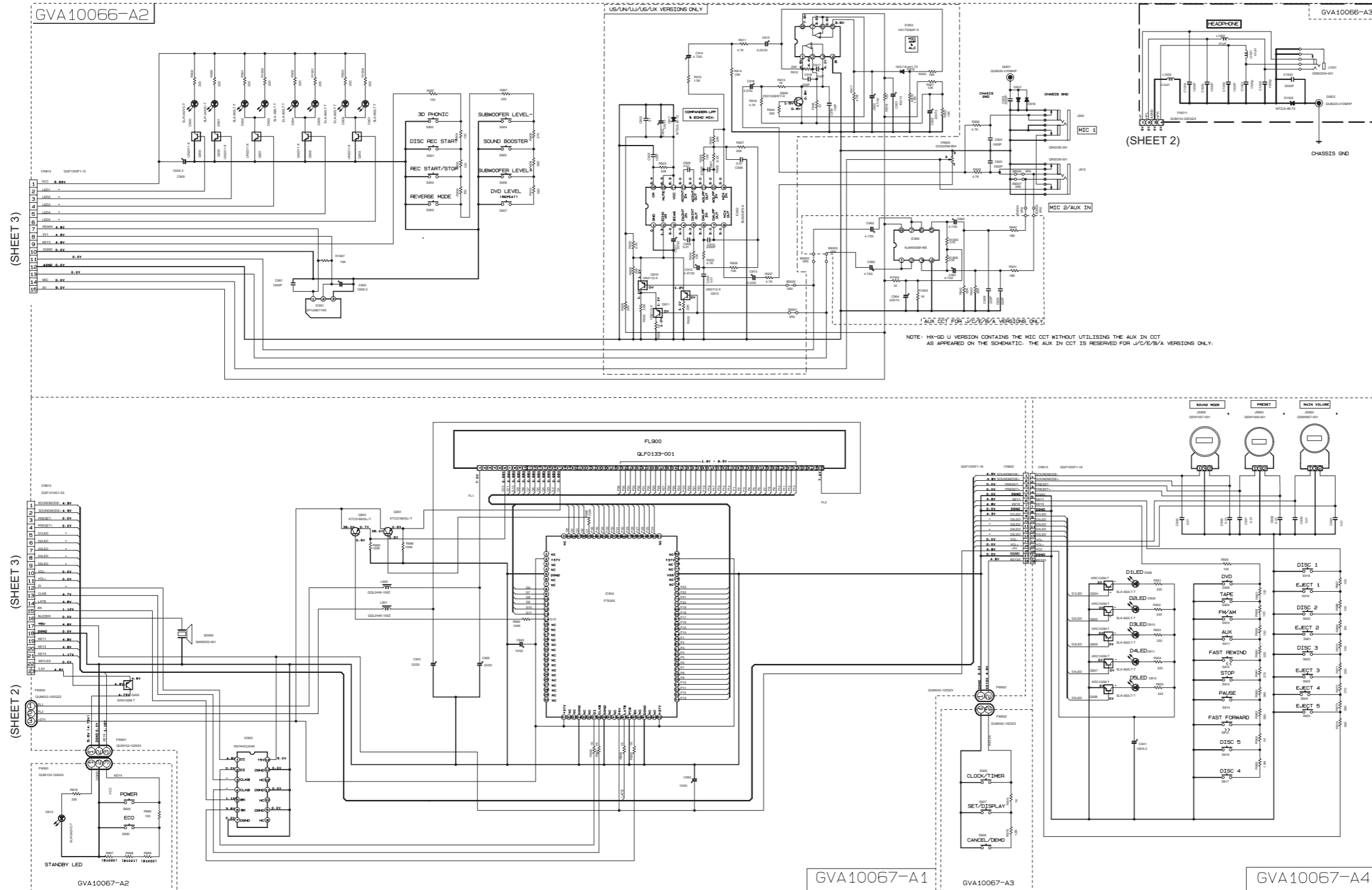


NOTES
 1. VOLTAGES ARE MEASURED WITH A DIGITAL VOLT METER OR OSCILLOSCOPE WITHOUT INPUT SIGNAL.
 CONDITION — AUX MODE: VOL. MIN. BASE OFF
 2. UNLESS OTHERWISE SPECIFIED:
 RESISTORS ARE 1/4W 1% CARBON RESISTOR.
 ALL RESISTANCE VALUES ARE IN OHMS.
 ALL CAPACITANCE VALUES ARE IN nF UNLESS OTHERWISE SPECIFIED.
 ALL CAPACITANCE VALUES ARE IN nF UNLESS OTHERWISE SPECIFIED.
 ALL E-CAPACITORS ARE SHOWN IN THE FORM OF CAPACITANCE (N/F/RATED VOLTAGE IV).
 ALL CODES ARE 156130-12

MODEL	HK-GX7	HK-GD7		HK-GDB		MODEL	HK-GX7	HK-GD7		HK-GDB	
VERSION	J/C	E SERIES	U SERIES	J/C	E SERIES	VERSION	J/C	E SERIES	U SERIES	J/C	E SERIES
R480	1.0K	1.3K	330/16	1.3K	1.3K	R495	6.8K	51K	51K	6.8K	6.8K
C487	220/16	220/16	330/16	220/16	220/16	R496	150K	180K	180K	150K	150K
R503	5.6K	10K	10K	5.6K	10K	R448	4.7K	4.7K	4.7K	4.7K	5.1K

▲ Parts are safety assurance parts.
 When replacing those parts make sure to use the specified one.

FL display / System control / User control keys section

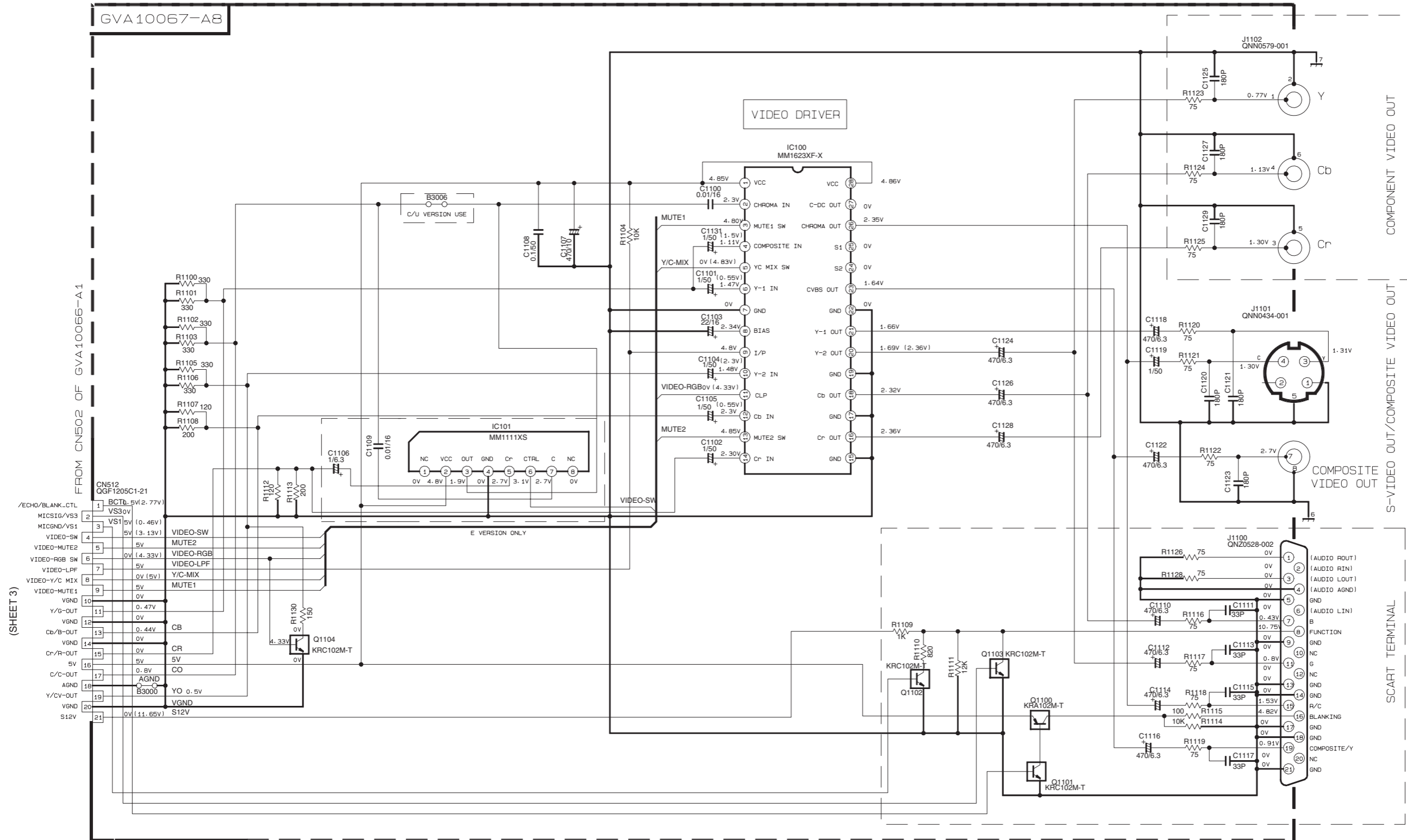


NOTE: HK-00 U VERSION CONTAINS THE MIC OCT WITHOUT UTILISING THE AUX IN OCT AS APPEARED ON THE SCHEMATIC. THE AUX IN OCT IS RESERVED FOR J/C/E/B/A VERSIONS ONLY.

GDB						G07						G07						
REF. NO.	GDB	J/C	B/E/EN/VE/EE	US/UN/UJ	UX	REF. NO.	G07	J/C	B/E/EN/VE/EE	US/UN/UJ	UX	REF. NO.	G07	J/C	B/E/EN/VE/EE	US/UN/UJ	UX	
R997(B1020)	100	100		220	430	R997(B1020)	430	820	2.7K	2.7K	10K	R997(B1020)	100	100	220	220	430	430
R998(B1021)	B/W	120		220	150	R998(B1021)	430	430	110	110	100	R998(B1021)	B/W	120	120	150	150	430
R999(B1022)	B/W	B/W		B/W	270	R999(B1022)	390	560	B/W	1.8K	110	R999(B1022)	B/W/B/W	B/W	220	270	390	560

- NOTES
- VOLTAGES ARE DC-MEASURED WITH A DIGITAL VOLT METER AUX MODE. VOL MIN. BASS OFF CONDITION — OR OSCILLOSCOPE WITHOUT INPUT SIGNAL.
 - UNLESS OTHERWISE SPECIFIED
RESISTORS ARE 1/4W ± 5% CARBON RESISTOR.
ALL RESISTANCE VALUES ARE IN OHM(Ω).
ALL CAPACITORS ARE CERAMIC CAPACITOR OR MYLAR CAPACITOR.
ALL CAPACITANCE VALUES ARE IN #F(P=PF).
ALL INDUCTANCE VALUES ARE IN #H(M=MH).
ALL E-CAPACITORS ARE SHOWN IN THE FORM OF CAPACITANCE (#F)/RATED VOLTAGE (V).
ALL DIODES ARE 1SS119-041-T2.
ALL TACT SWITCH ARE QSN0674-001Z
NI ———> COMPONENT NOT INSERT
SHORT ———> REPLACE BY BUS WIRE
 - CN90 ONLY USE FOR FLASH MICOM

Video output circuit section

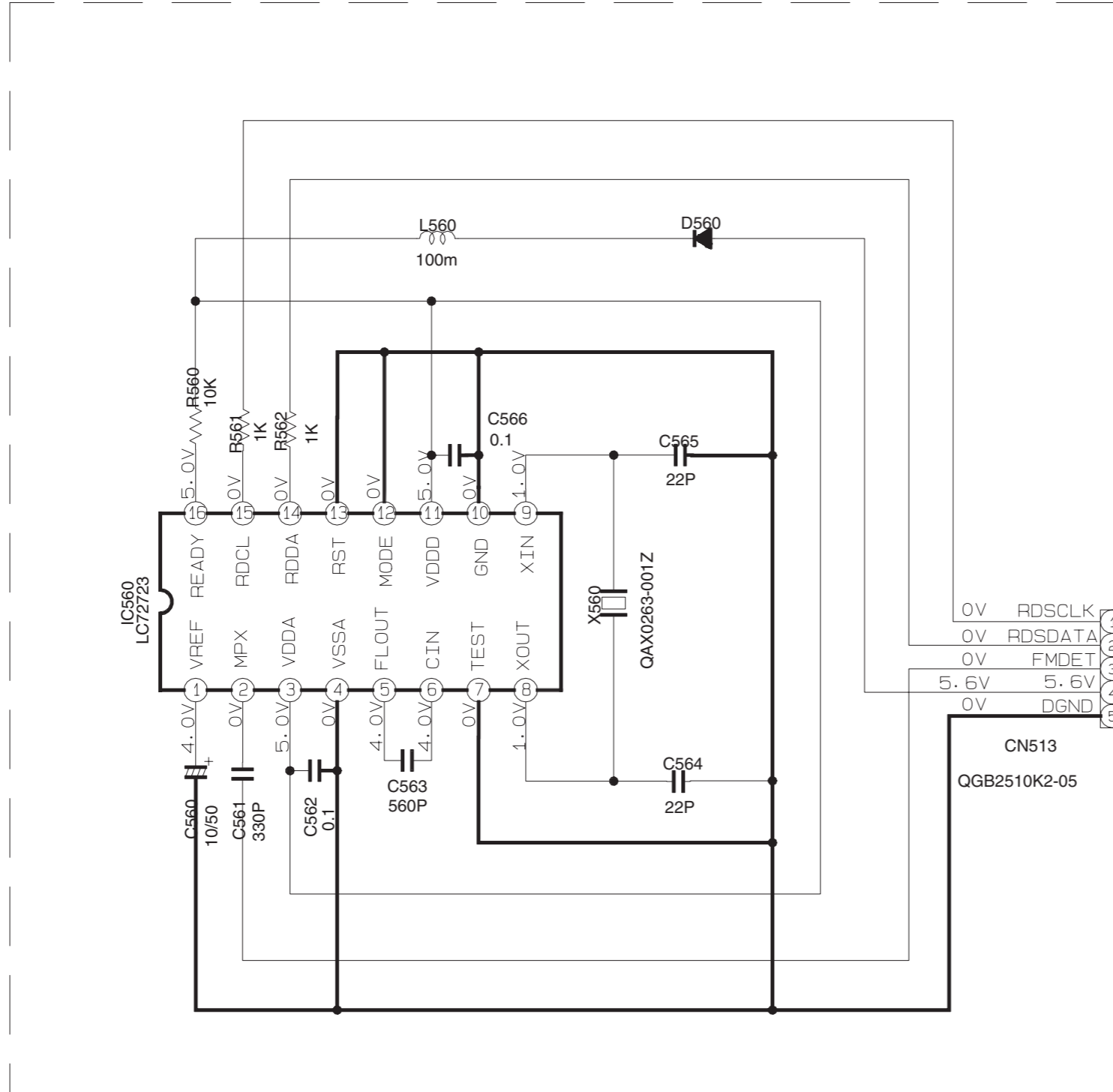


NOTES

- VOLTAGES ARE DC-MEASURED WITH A DIGITAL VOLTMETER OR OSCILLOSCOPE WITHOUT INPUT SIGNAL CONDITION -- PLAY DVD THEN STOP. VOL MIN. BASS OFF
- UNLESS OTHERWISE SPECIFIED
RESISTORS ARE 1/4W. 5% CARBON RESISTOR
ALL RESISTANCE VALUES ARE IN OHM
ALL CAPACITORS ARE CERAMIC CAPACITOR OR MYLAR CAPACITOR
ALL CAPACITANCE VALUES ARE IN UF (P = pF)
ALL INDUCTANCE VALUES ARE IN H (m=μH)
ALL E-CAPACITORS ARE SHOWN IN THE FORM OF CAPACITANCE (uF)/RATED VOLTAGE(V)
ALL DIODES ARE 1SS119-041-T2
- THE VOLTAGES SHOWN ARE FOR ALL VERSION EXCEPT FOR E-VERSION. E VERSION VOLTAGES ARE SHOWN IN () FORM IF THEY DIFFER FROM THE COMMON VOLTAGES

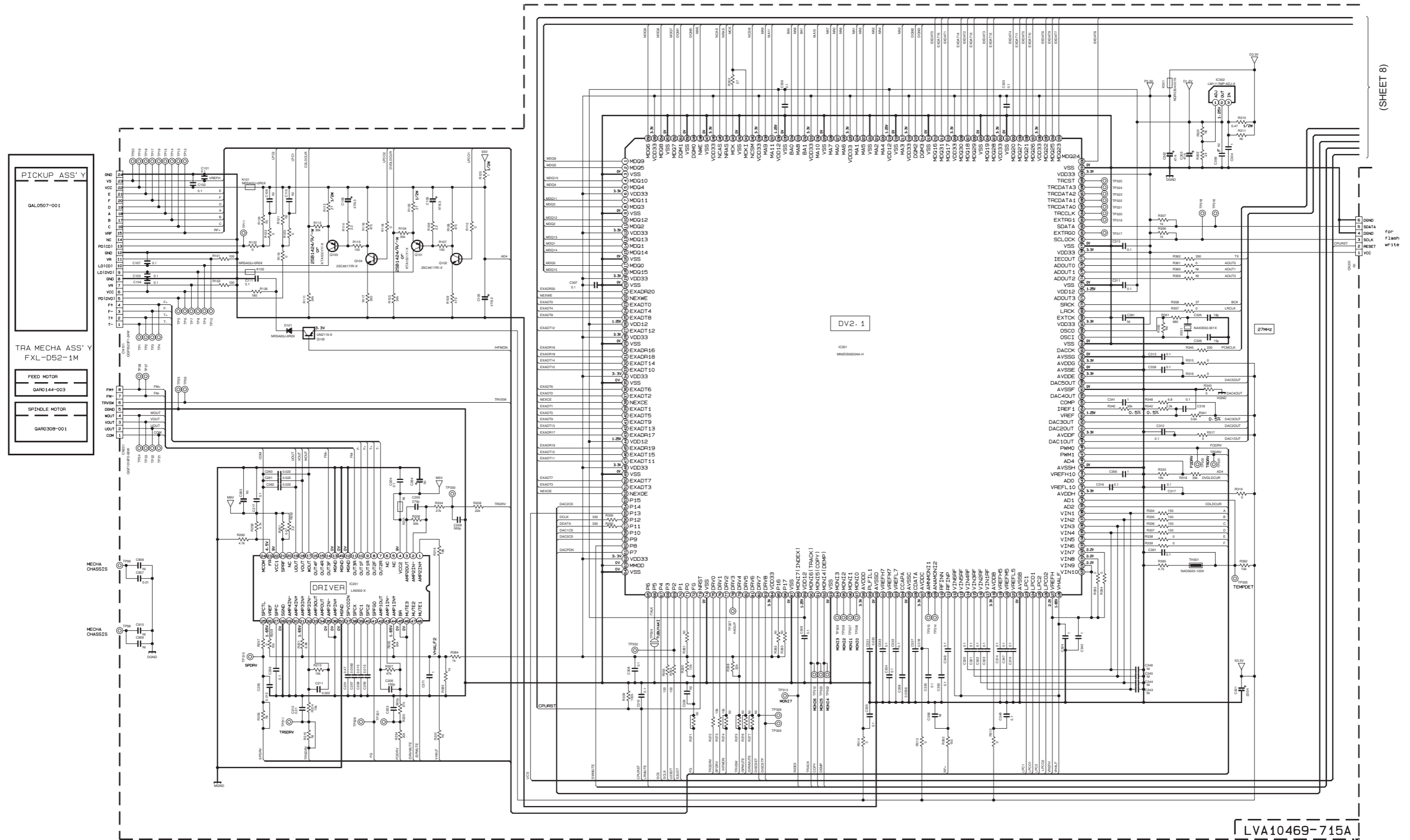
■ RDS circuit section

*
FOR EUROPE ONLY



TO CN503 OF GVB10066-A1
(SHEET 3)

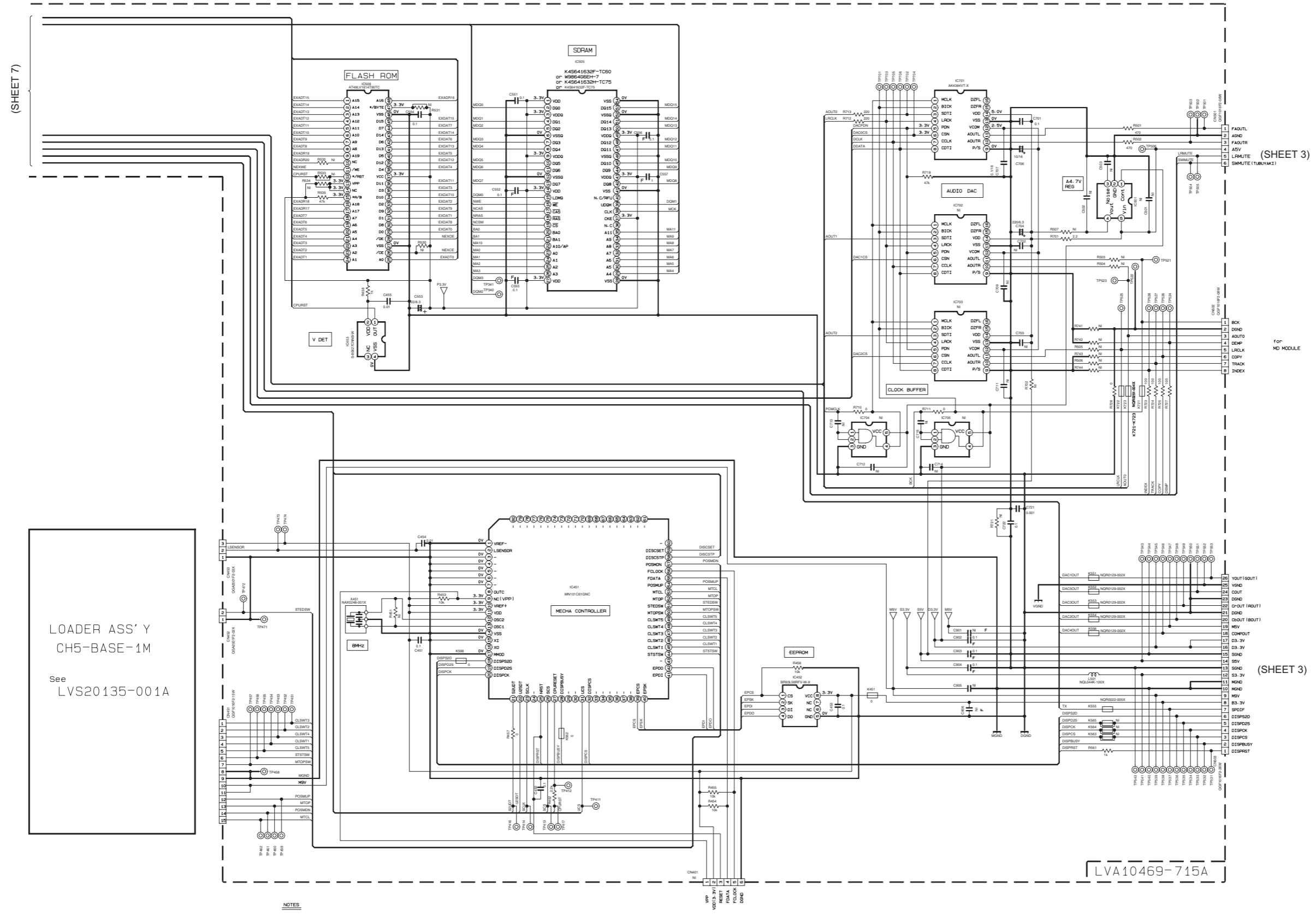
■ DVD servo / DVD system control section



(SHEET 8)

For flash write

■ DVD changer mechanism control section



(SHEET 7)

(SHEET 3)

for MD MODULE

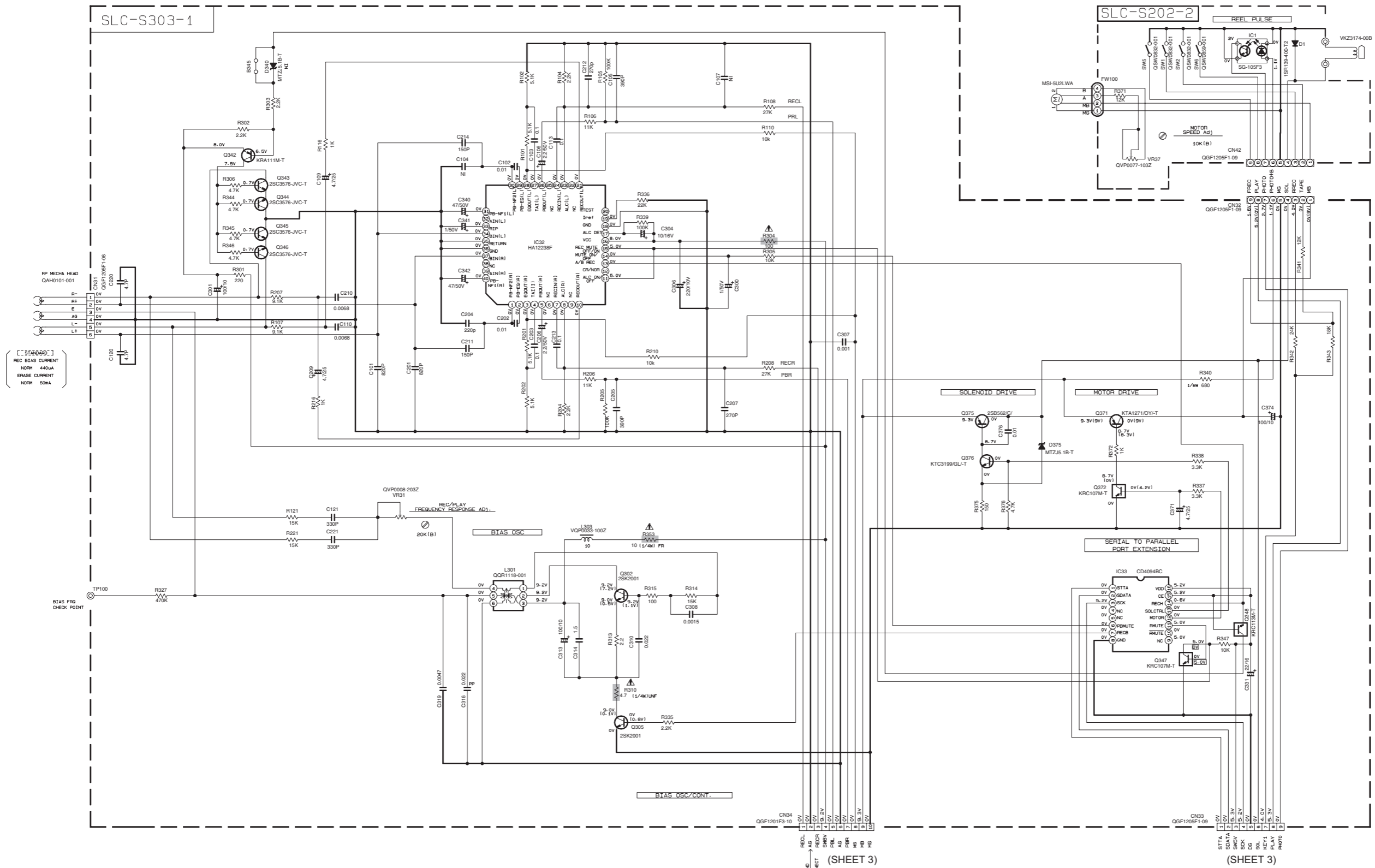
(SHEET 3)

LOADER ASS'Y
CH5-BASE-1M
See
LVS20135-001A

LVA10469-715A

- NOTES**
- VOLTAGES ARE DC-MEASURED WITH A DIGITAL VOLT METER WITHOUT INPUT SIGNAL.
CONDITION --- A DVD disc in Tray1; STOP mode
 - UNLESS OTHERWISE SPECIFIED.
ALL RESISTORS ARE 1/10W ±5% METAL GLAZE RESISTOR, OR 0.5X METAL GLAZE RESISTOR.
ALL CAPACITORS ARE 50V ±20V ±5V ±10V OR 6.3V CERAMIC CAPACITOR.
ALL RESISTANCE VALUES ARE IN Ω[M]G.
ALL CAPACITANCE VALUES ARE IN #F(p)pF).
ALL E-CAPACITORS ARE SHOWN IN THE FORM OF CAPACITANCE(μF)/RATED VOLTAGE (V).
ALL INDUCTANCE VALUES ARE IN μH(mmh).
 - NE STANDS FOR NOT INSERTED PARTS.
4. DIGITAL TRANSISTOR
- UN2159-X =
- for flash writer

■ Tape circuits such as pre-amplifier and bias / Tape deck mechanism control section



NOTES

1. VOLTAGES ARE DC-MEASURED WITH A DIGITAL VOLT METER OR OSCILLOSCOPE WITHOUT INPUT SIGNAL. CONDITION : MECHA STOP MODE

2. UNLESS OTHERWISE SPECIFIED, RESISTORS ARE 1/10W ±5% METAL GLAZE RESISTOR. ALL RESISTANCE VALUES ARE IN OHM(S). ALL CAPACITORS ARE CERAMIC CAPACITOR OR MYLAR CAPACITOR. ALL CAPACITANCE VALUES ARE IN #F(PPF). ALL INDUCTANCE VALUES ARE IN #H(MHF). ALL CAPACITORS ARE SHOWN IN THE FORM OF CAPACITANCE (#F)/RATED VOLTAGE (V). POLYPROPYLENE CAPACITOR

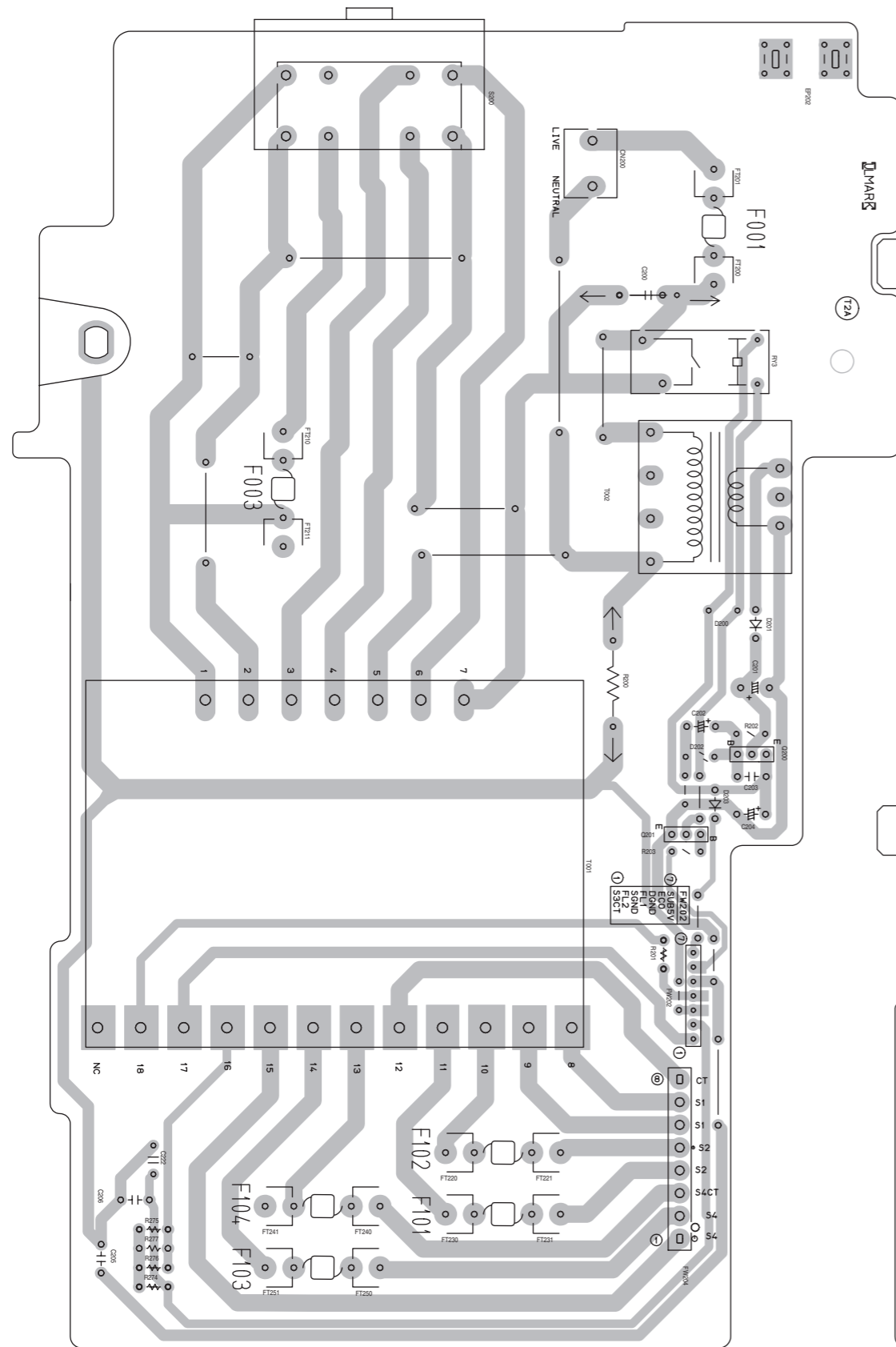
(SHEET 3)

(SHEET 3)

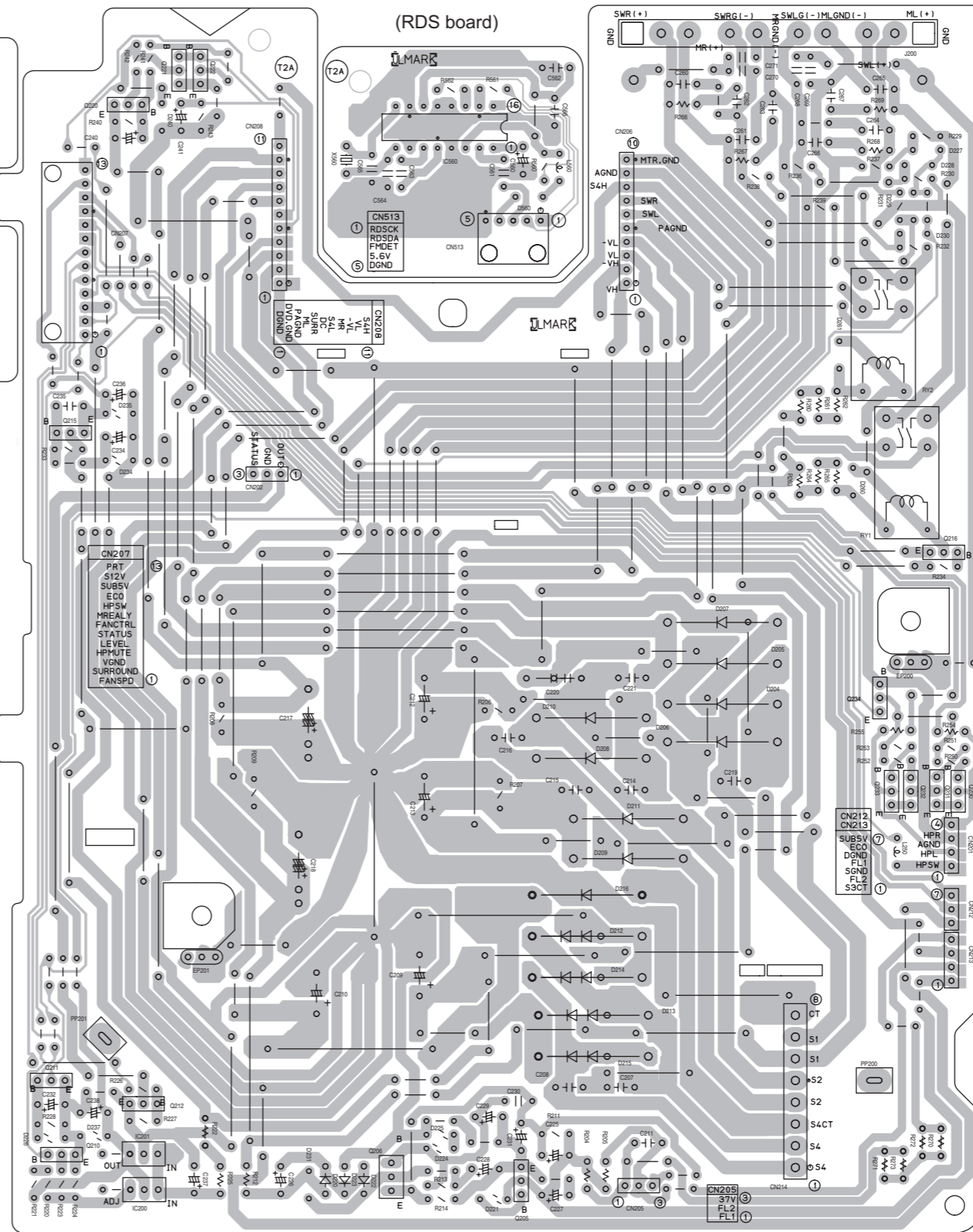
▲ Parts are safety assurance parts. When replacing those parts make sure to use the specified one.

Printed circuit boards

■ Power board

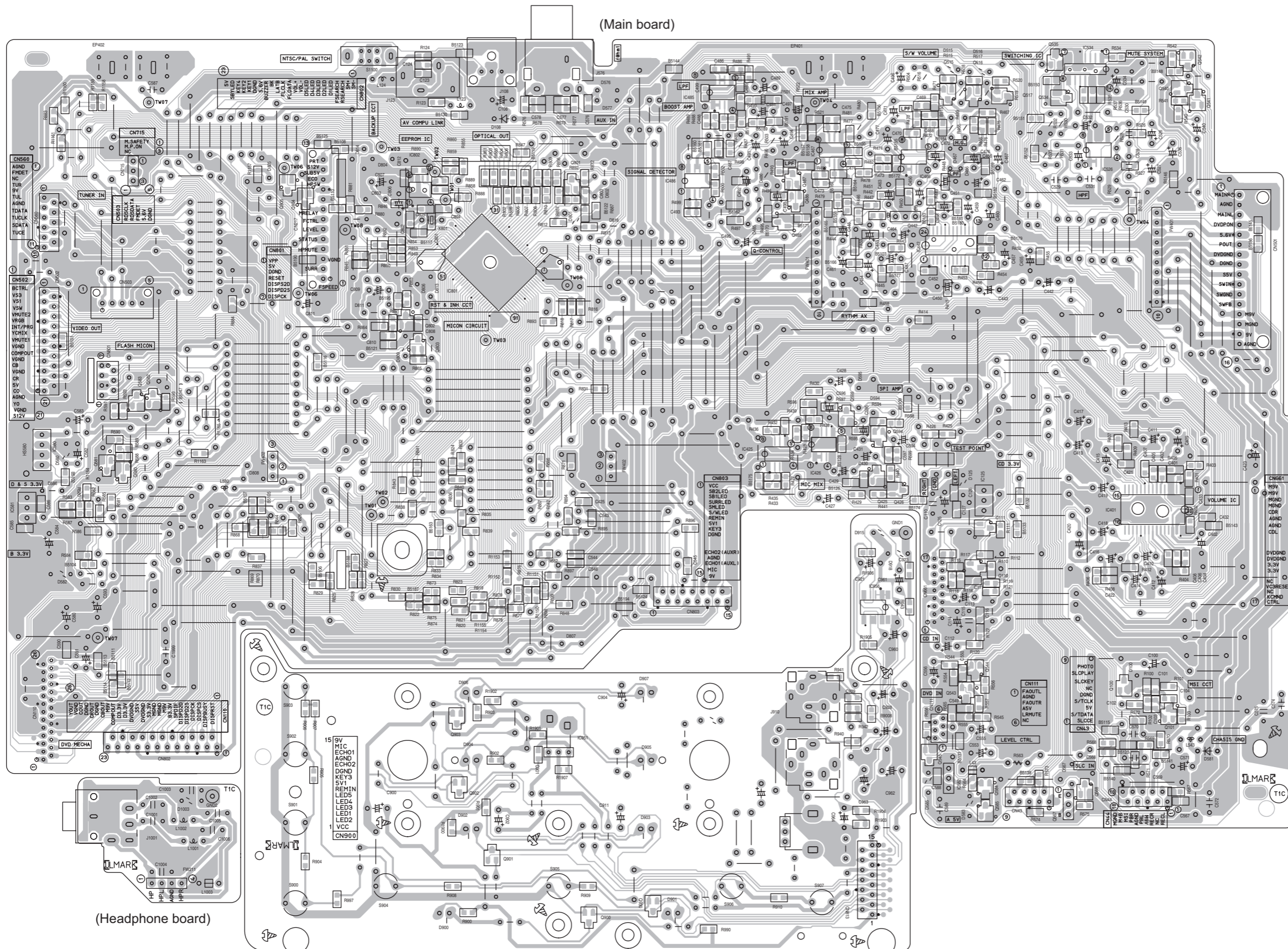


(Primary board)



(Bridge board)

■ Input board



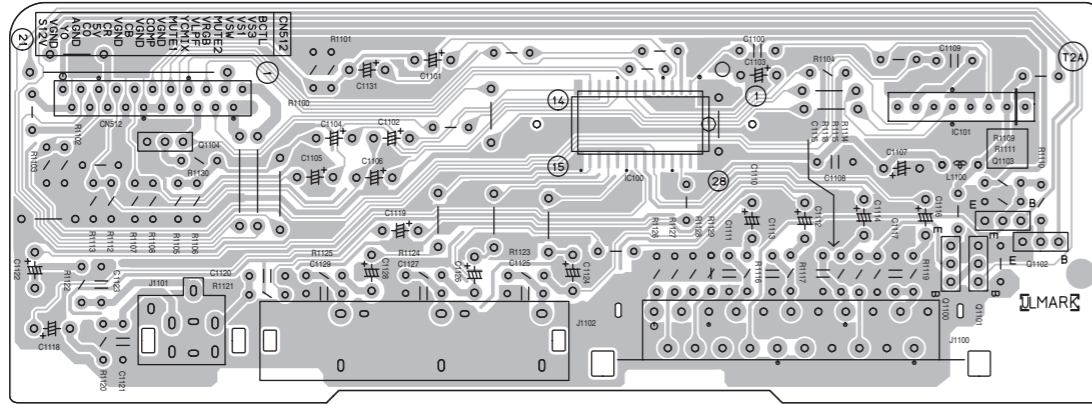
(Main board)

(Headphone board)

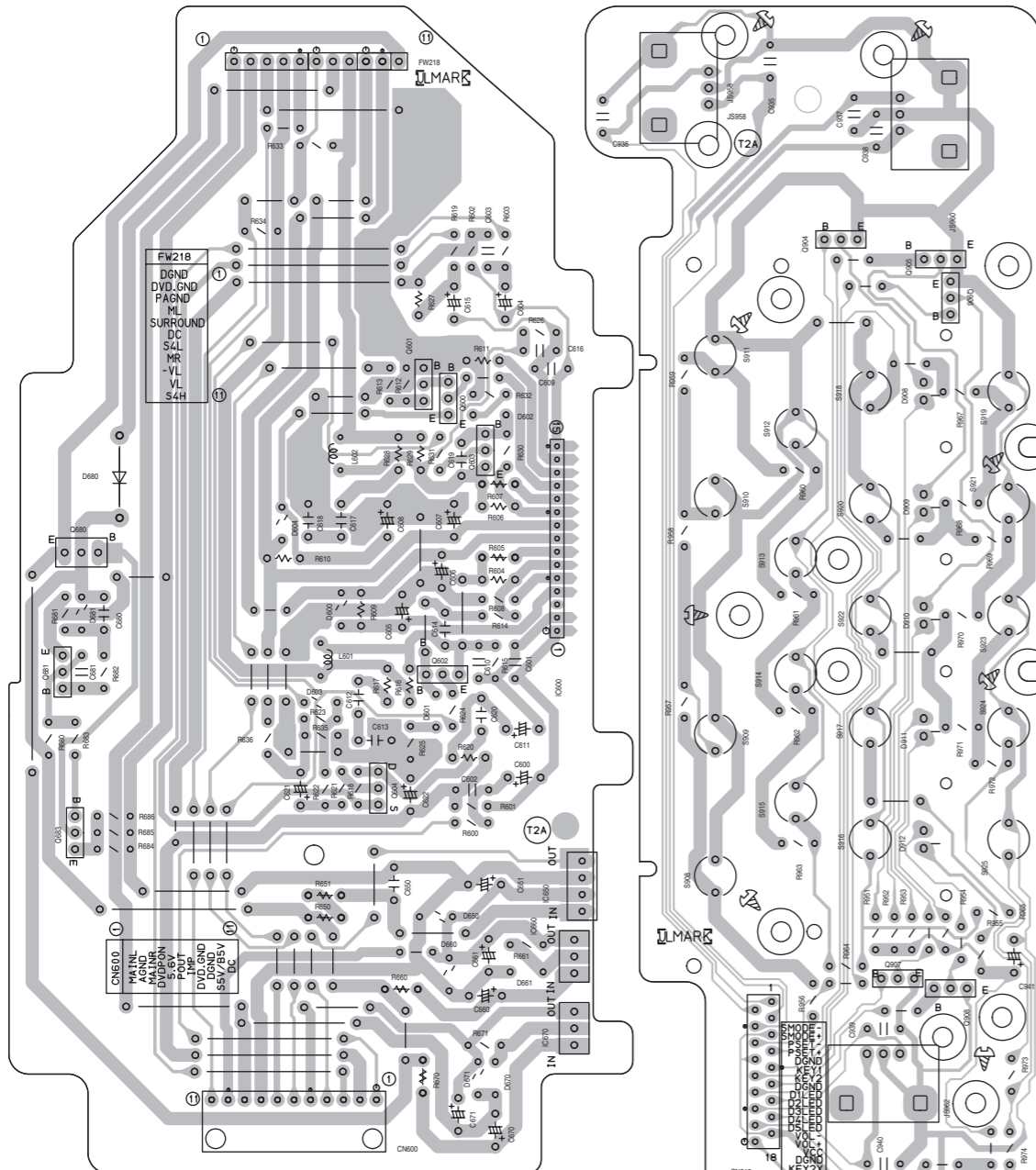
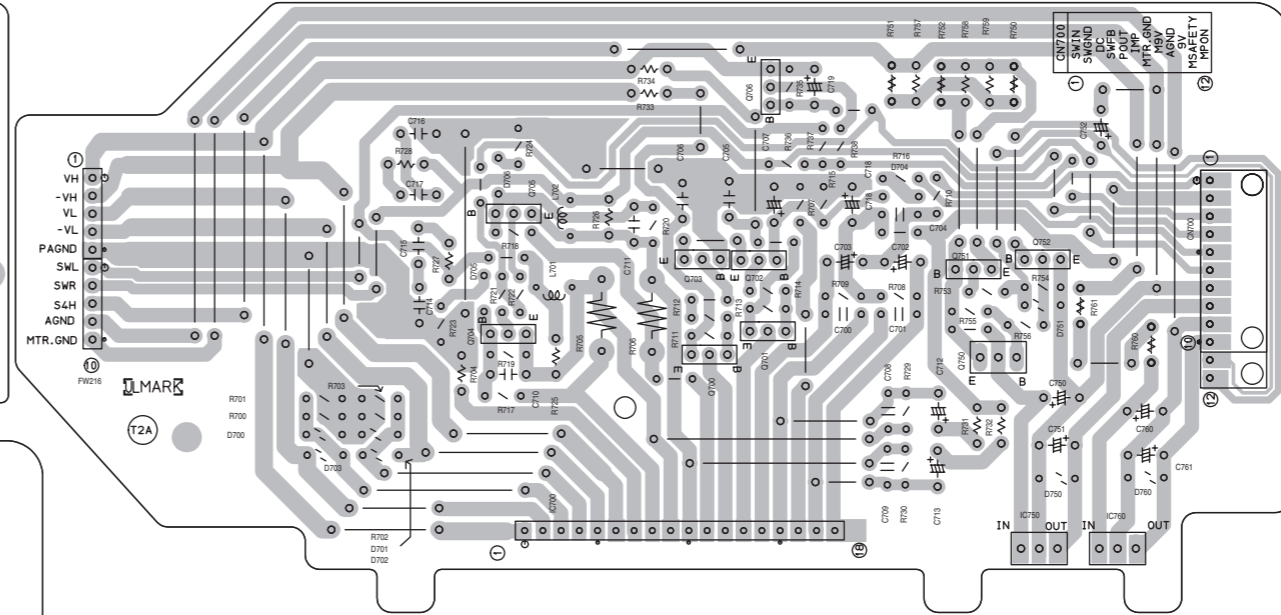
(Microphone board)

■ Front board

(Video board)

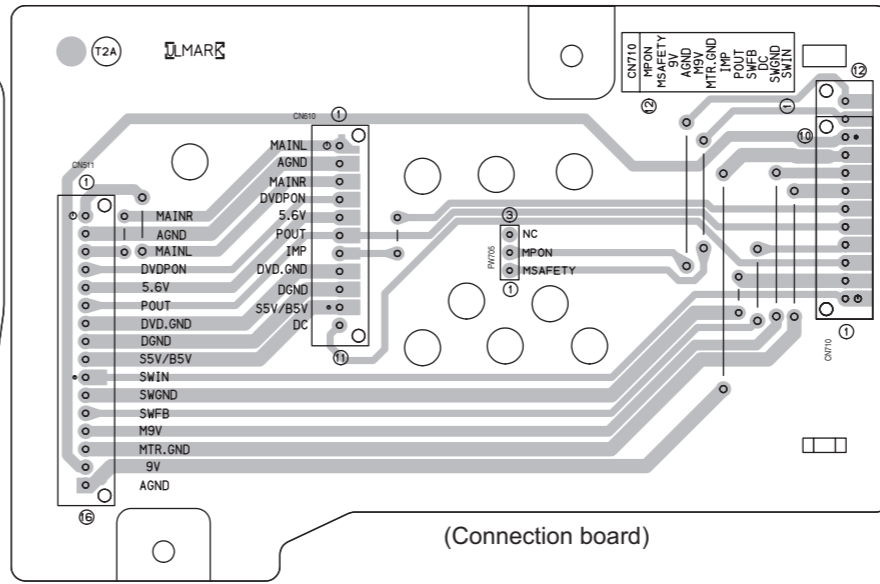
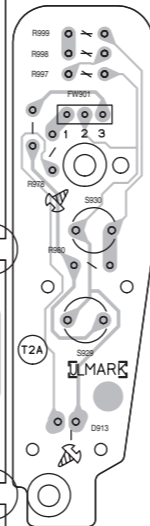


(Subwoofer amplifier board)



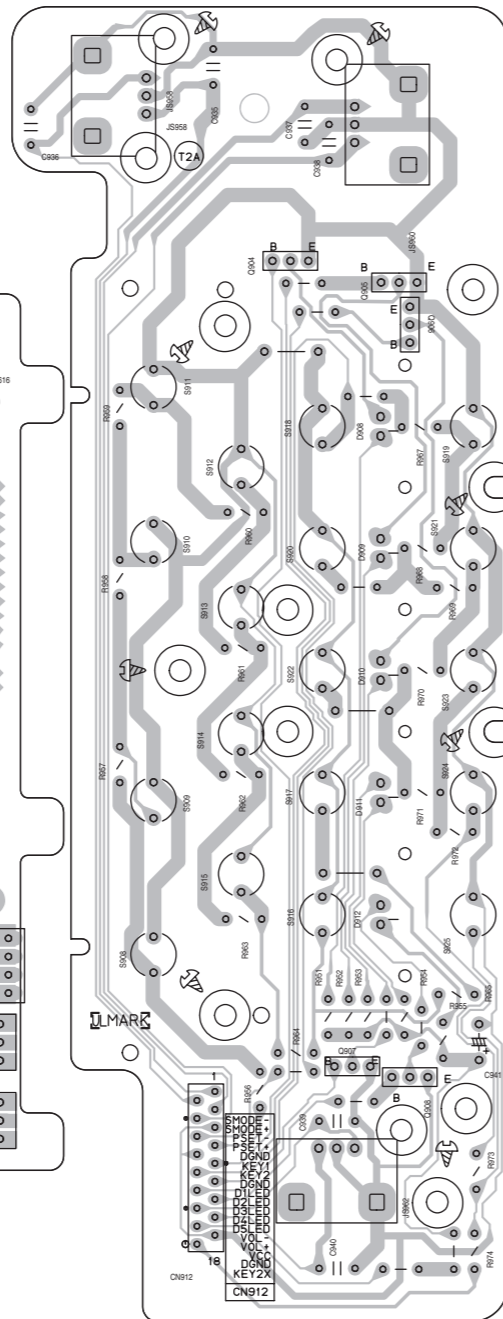
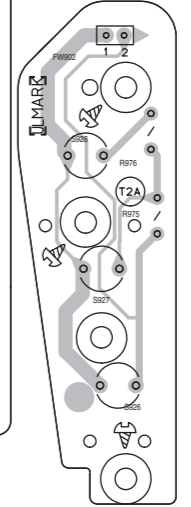
(Main amplifier board)

(Standby LED board)

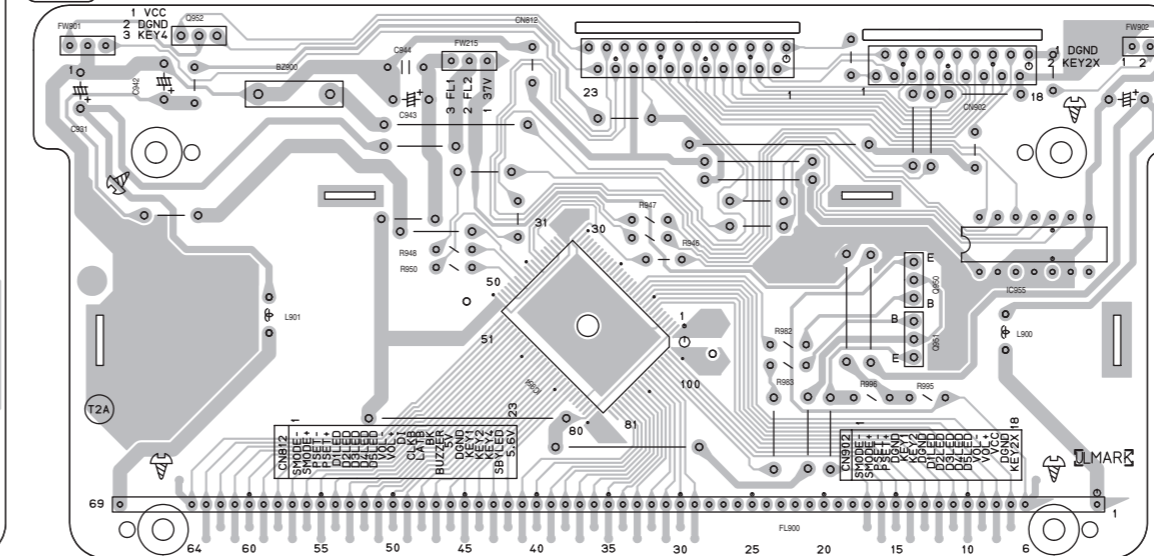


(Connection board)

(Switch board)

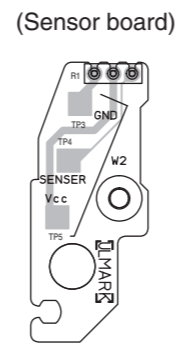
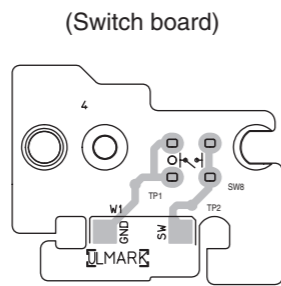
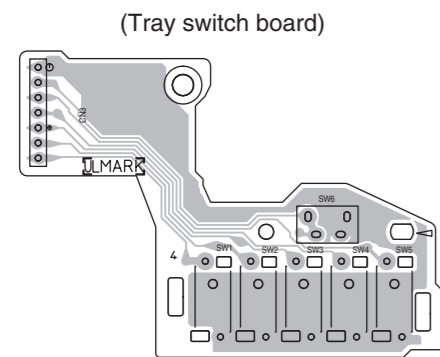
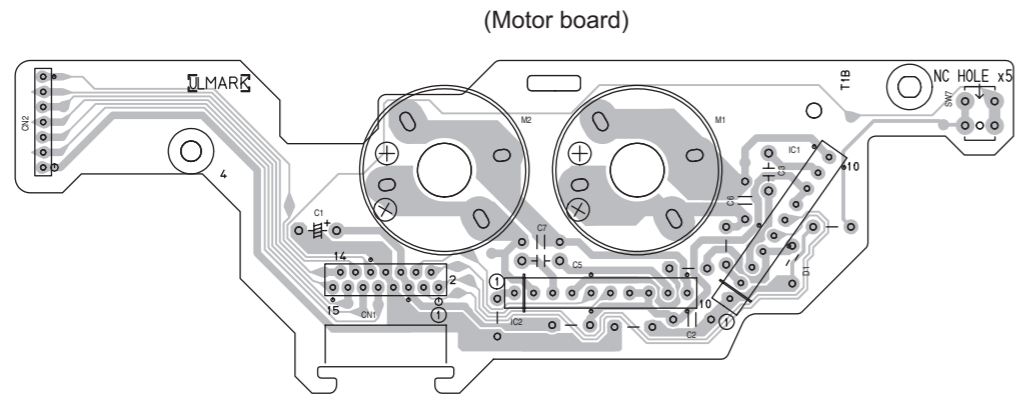


(Encoder board)

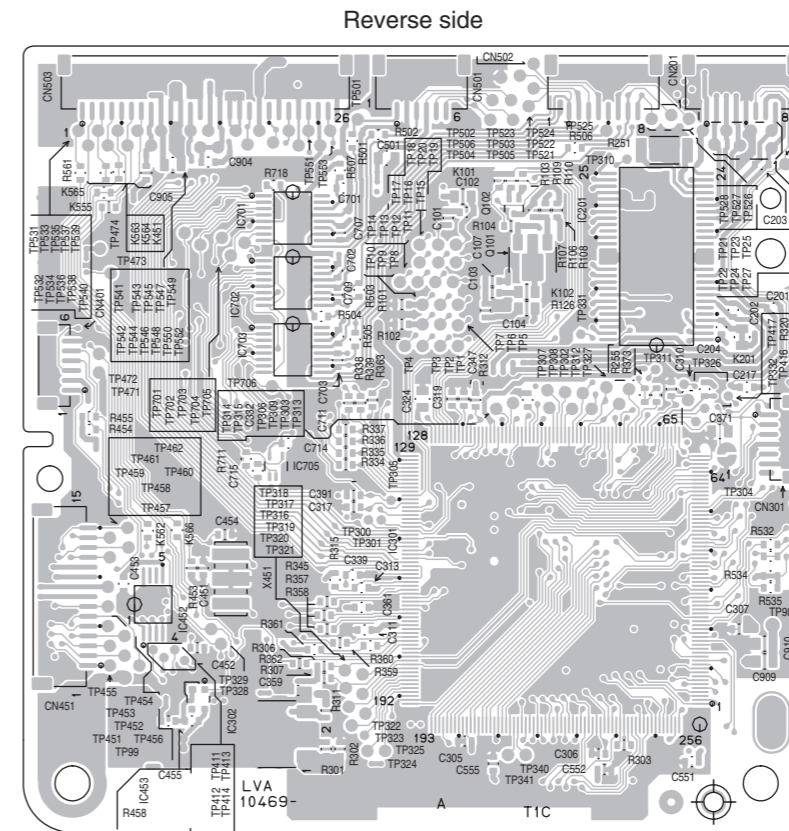
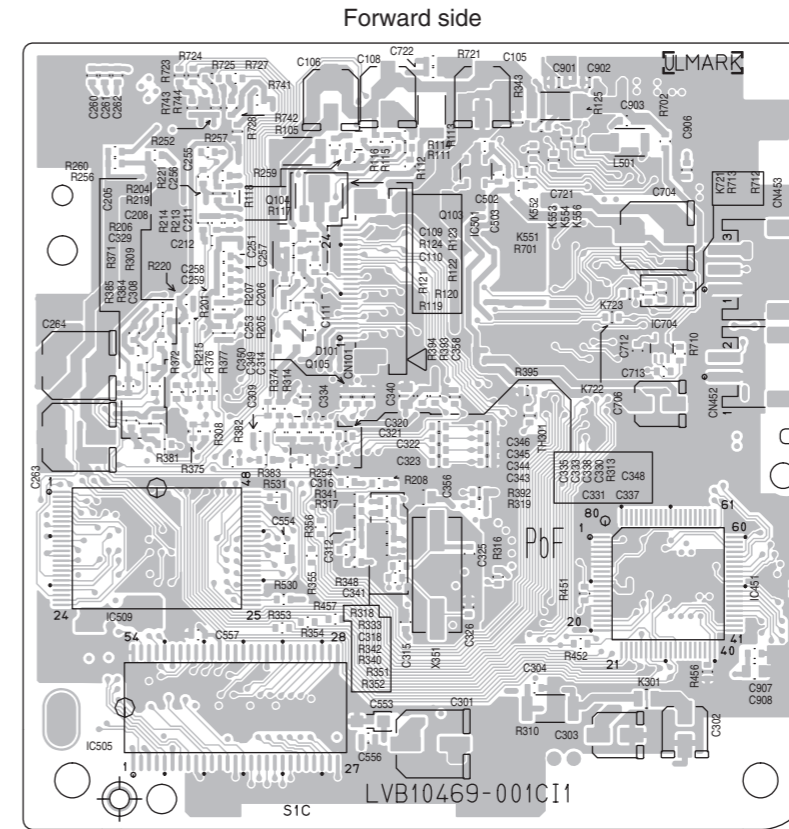


(FL board)

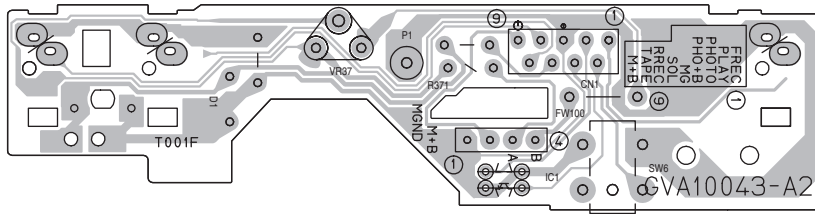
■ Loading board



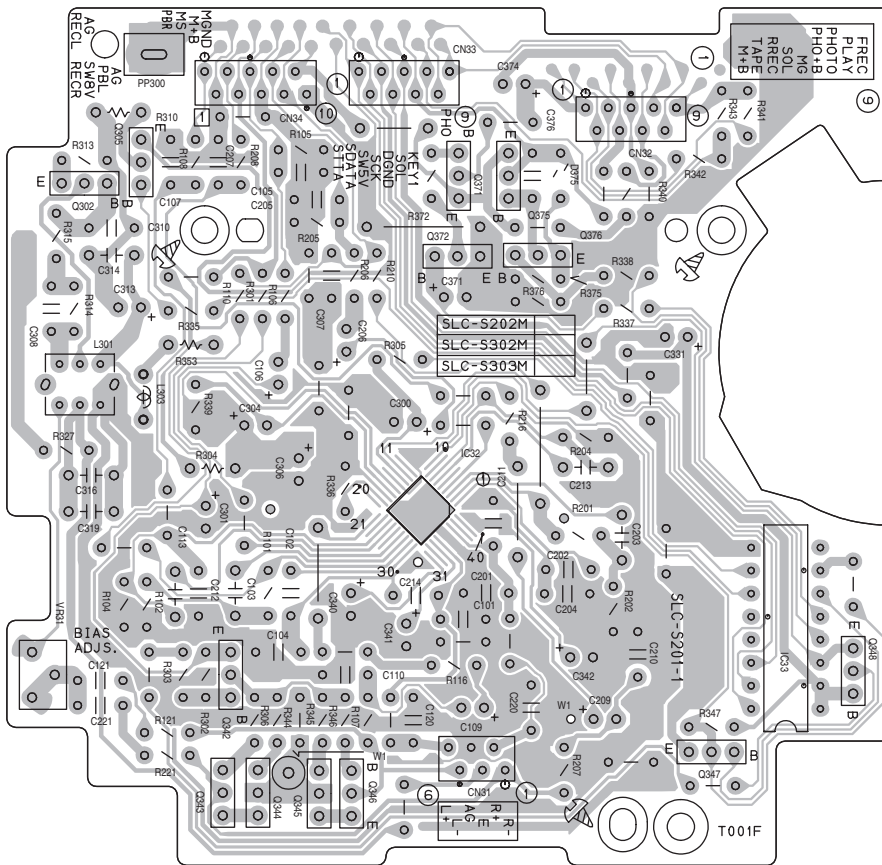
■ DVD servo board



■ Cassette switch board



■ Head amplifier board



JVC

Victor Company of Japan, Limited

AV & MULTIMEDIA COMPANY AUDIO/VIDEO SYSTEMS CATEGORY 10-1, 1chome, Ohwatari-machi, Maebashi-city, 371-8543, Japan

(No.MB277SCH)



Printed in Japan
WPC